

Scotland's Wood Fuel Task Force



INCREASING THE SUPPLY OF
WOOD FOR RENEWABLE ENERGY
PRODUCTION IN SCOTLAND

A REPORT BY THE WOOD FUEL TASK FORCE
TO THE MINISTER FOR THE ENVIRONMENT
January 2008

Roger Coppock
Business Development Advisor
All-Energy '08
Aberdeen
21st May 2008



Set up by the Minister in June 2007

Terms of Reference

- Identify & quantify under-exploited sources
- Propose actions to overcome barriers to access
- To advise on environmental limits, market mechanisms and technological issues.

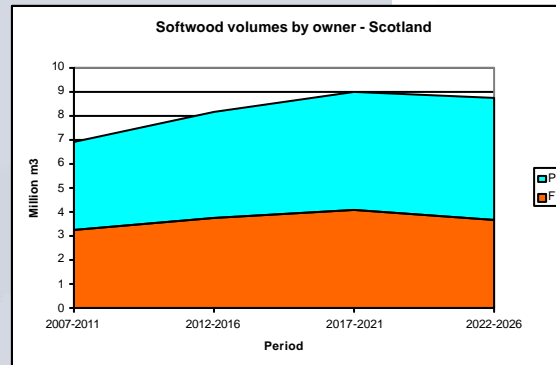
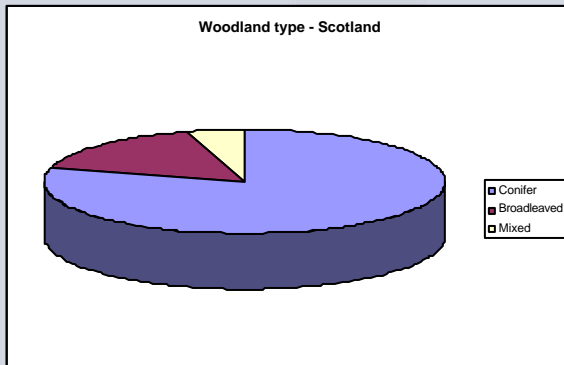
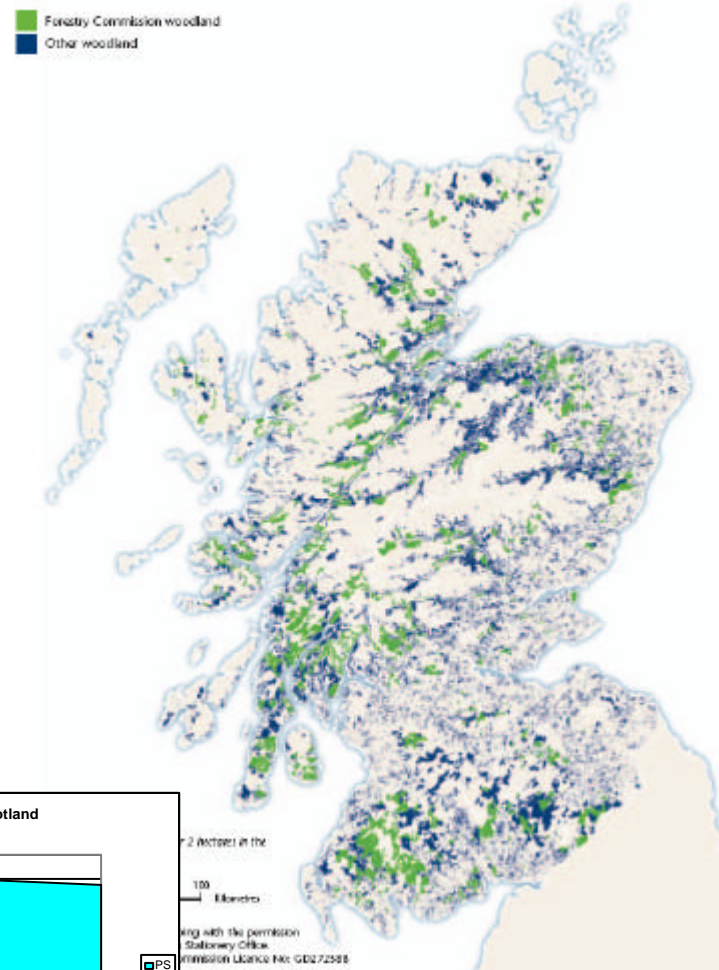
Working groups

- Established forests
- Small and neglected woodlands
- Short rotation coppice and energy forestry
- Arboricultural and landscaping activities
- Recycled wood & waste wood
- Market price and trading mechanisms

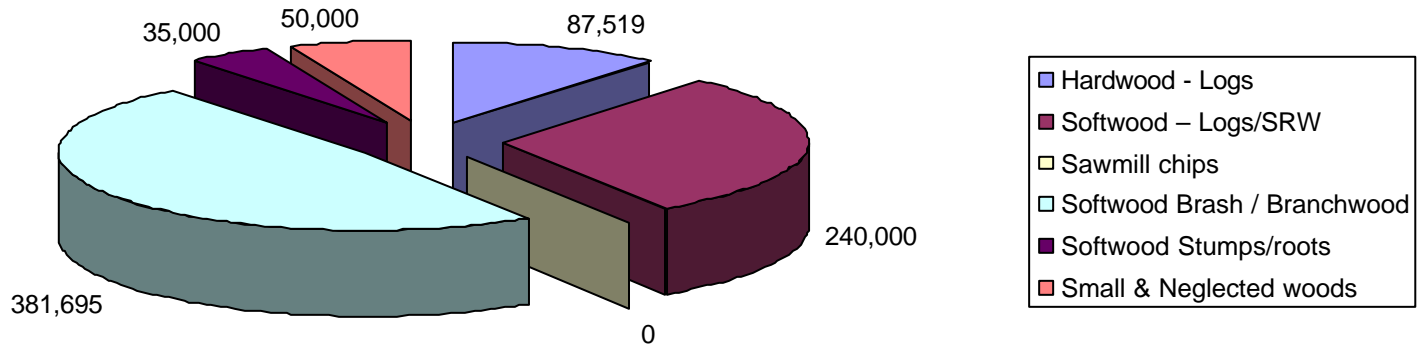
Reported January 2008

- State 34%,
- Private Sector 66%
- Outputs are very site specific
- Commercial forests, small and neglected woodlands, farm woods, urban woods, native woodlands, roadside trees
- Consists of both conifer and broadleaved

Map 3 Distribution of woodland over 2 hectares by ownership



Potential volumes available over the next five years



- Total - 0.8 million Oven Dry Tonnes

Advantages

- Sustainable fuel resource
- Carbon neutral fuel
- Opportunities for farm diversification
- Indigenous resource – local job and wealth creation
- Grown Close to end users
- Quick growth
- Better use of poorer quality/less productive land



Disadvantages

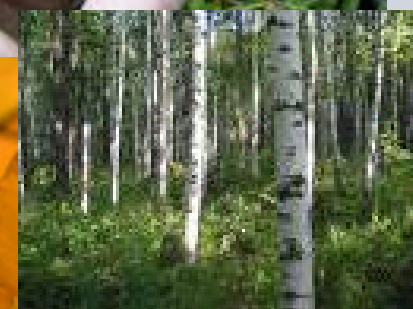
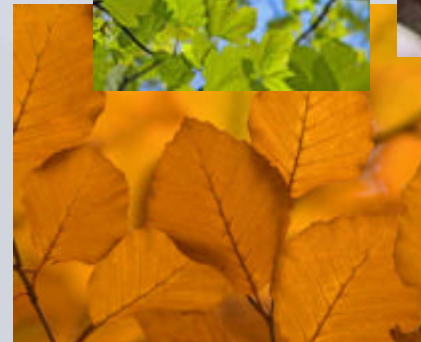
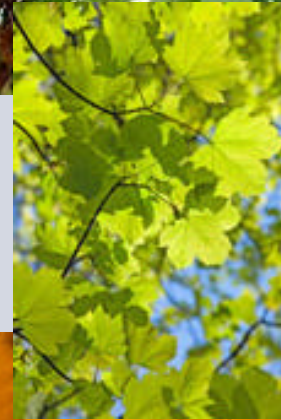
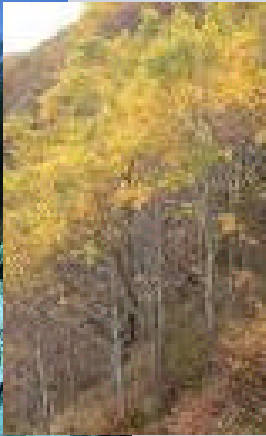
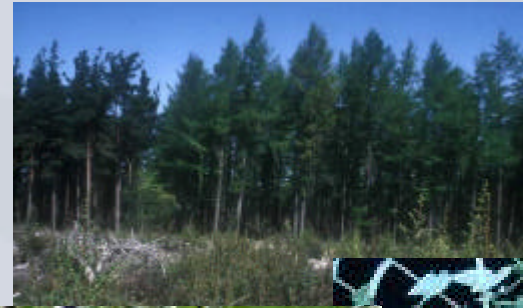
- Non-traditional crop only suitable as a fuel in most cases
- Economics v grain production
- Ties up land for long time (10 year contracts)
- Limited planting in Scotland at present - 300-1000ha
- Demand of 30,000 ha will cause major land use change

Advantages

- Flexibility, potential for both biofuel use and as a timber resource.
- No additional skills or equipment required above standard forestry practice
- Alternative to stock production

Disadvantages

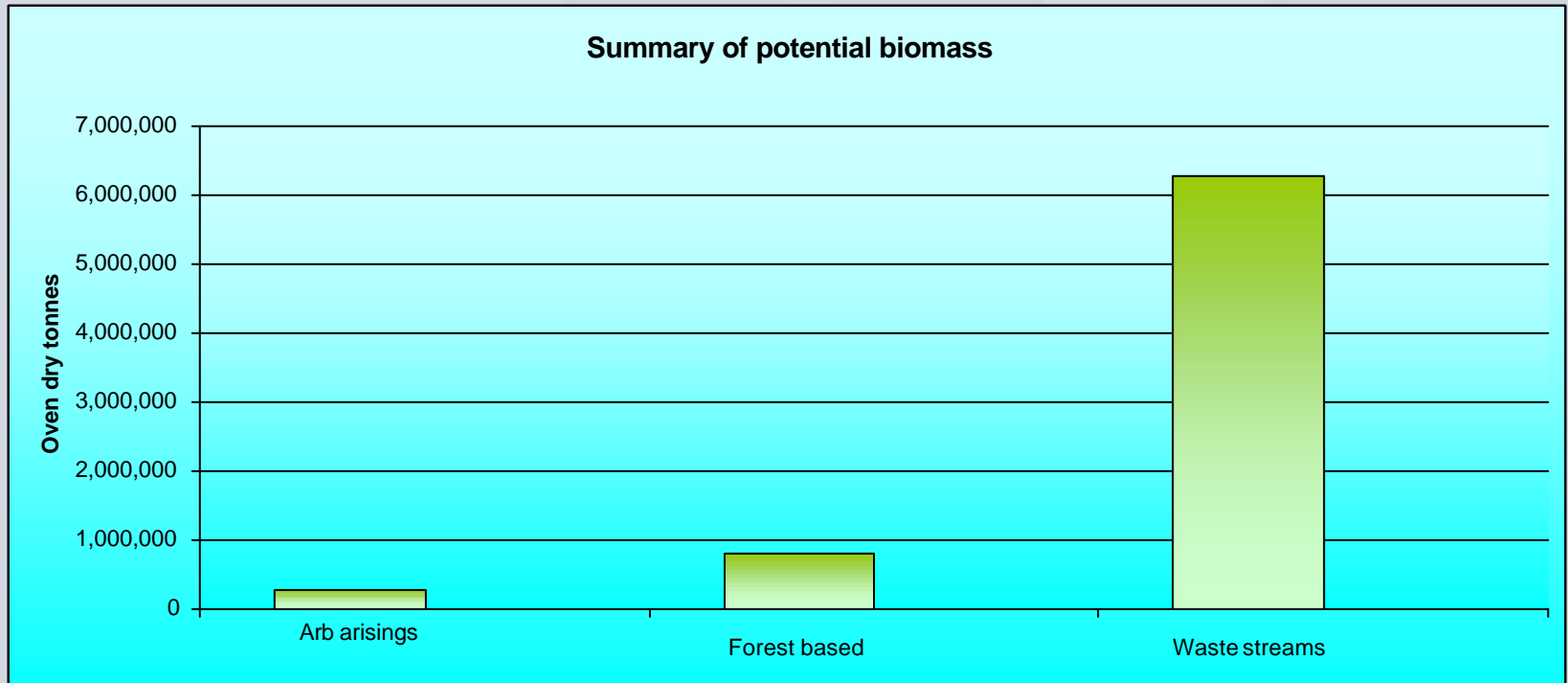
- Lack of knowledge about outputs / yield and species choice
- No commercial SRF in Scotland, so no experience
- Relatively long term commitment (10-15 years)



- Commercial and Industrial 5,400,000 tonnes
- Similar to agricultural 531,000 tonnes
- Wood processing 244,000 tonnes
- Landscaping 98,000 tonnes
- Arboriculture 268,000

- SEPA waste biomass study identified approx 10 million tonnes of waste biomass. Wood Fuel Task Force = 7.3 million tonnes.
- *** DATA Issues ***





Quantity

- Significant opportunities to increase wood fuel supply
- up to 1,000,000 odt/yr of new 'green wood' sources
- up to 5,000,000 odt/yr from waste steams
- (over and above existing small round wood)

Generic issues

- Good quality data
- Market drivers (e.g. standardisation, trading, pricing)
- Efficient supply chain
- Support & incentives (focus on market failure)
- Regulation & planning

- Better what and where information
- Best practice R&D, demonstration
- Support grant for branch wood recovery
- Recognise conversion period in SRC support
- LCA-informed land-use policy
- Encourage change in farmer attitudes towards planting

- Recognition of wood fuel as a positive use
- Landfill tax increases in pipeline
- Making segregation at source easier
- Free drop-off points and collect services
- Better what and where information

- Continuity of support for capital installation
- Use of banded ROCs to shape demand
- Focus on heat production close to raw material supplies
- Promote demand-supply clusters
- Make wood fuel easy to buy
- Biofuels and the future.....

- 9th May
- Most recommendations accepted
- Work with COSLA on waste streams
- Plenary in October 2008

 The Scottish Government

Wood Fuel Task Force Response



www.forestry.gov.uk/forestry/INFD-7APFXA