

# Effectively Managing Community Benefit



- **Foundation role**
- **Track record**
- **Approach**
- **Challenges**
- **Opportunities**

# Foundation Role – Client Range



Developers / Operators



Individuals & Families



Charitable Foundations



Companies

# Significant grantmaker



# Track record

10 programmes with 5 developers & many discussions



## **Scottish & Southern Energy**

Tangy (Argyll & Bute)  
Glendoe Hydro (Highland)  
Sanday (Orkney)  
Drumderg (Perth & Kinross)  
Achany (Highland)  
Fairburn (Highland)  
Toddleburn (Borders, via Airtricity/SSE)

## **Falck**

Earlsburn (Stirling)

## **Asda**

Falkirk

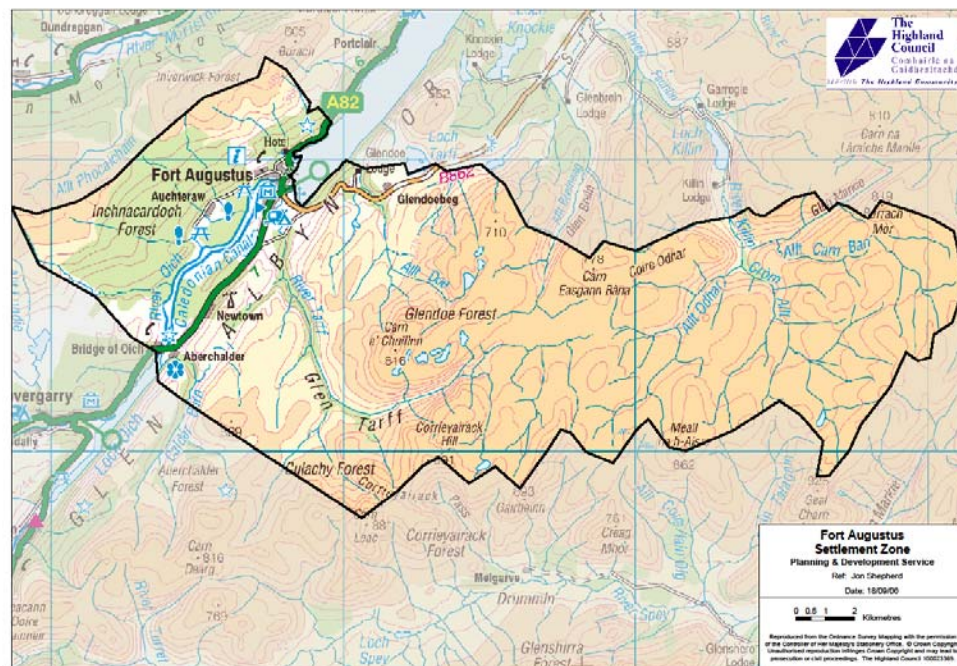
## **Wind Prospect / EDF**

Longpark (Borders)

## **In discussion ...**

Green Power  
Wind Energy  
Eurus  
nPower  
.  
.  
.

# Approach



## Features

- One or more CC areas
- Community Profile
- Establish a local body (Panel)
- Promote funding opportunity
- Analyse proposals
- Transact & monitor funding
- Provide reports

# Challenges

Sustained communication  
required at early stage

- overcome concern of  
apparent additional layer

Neutral role

- no negotiation of fund  
values for community

Intensive early support

- to generate a  
Community Profile and a  
decision making body in  
community

Approach to working with one  
or more community council  
boundaries contrasts with some  
local authority 'protocols'

(e.g. 15km radius and 60/40  
local / widespread funds)

# Benefits & Opportunities



## **For Developers**

Outsourced management

Quick wins & robust projects

Full audit trail on finance / decisions

Long-term & flexible support

## **For Communities**

Full planning support

Ease of access to funds

Independence & transparency

Growth in community capacity