

# Safety in the Spotlight

Chris Streatfeild

Director of Health & Safety

embrace

# Overview

- Speaker & BWEA
- BWEA Strategy
- Key issues in the spotlight
- Summary

embrace

# Speaker & BWEA



# Speaker & BWEA

- Direct Board level Reporting
- Board Director chairs strategy group
- Cross industry & technology representation

embrace

# BWEA Strategy



*“Ensure that Health & Safety is top priority in the wind, wave & tidal industry and that best practice is applied to ensure the good reputation of renewable generation is maintained.”*

embrace

# Core Activities

- Members advice
- BWEA Secretariat
- Media/Communications
- Emergency & Incidents
- Professional liaison
- Increasing engagement
- Regulator representation
- Safety Alerts
- Guidelines
- Conferences

embrace

BUILDING RESILIENCE: REDUCING RISK:  
ADDING VALUE

&

COMPLIANCE: SKILLS: LEADERSHIP:  
CULTURE

embrace



# Key issues in the spotlight

embrace

# Key issues in the spotlight

- Public safety
- Training
- WTSR
- Switchgear
- Wind Week 2009
- Incident Management

embrace

# Public Safety

- Safety/Reputation risks
- Key issues
  - Planning & Design
  - Maintenance & Monitoring
- What are we doing
  - Learning lessons
  - NG/HA/HSE engagement
  - New guidelines?



**BWEA**

Delivering the UK's wind, wave and tidal energy

# Training

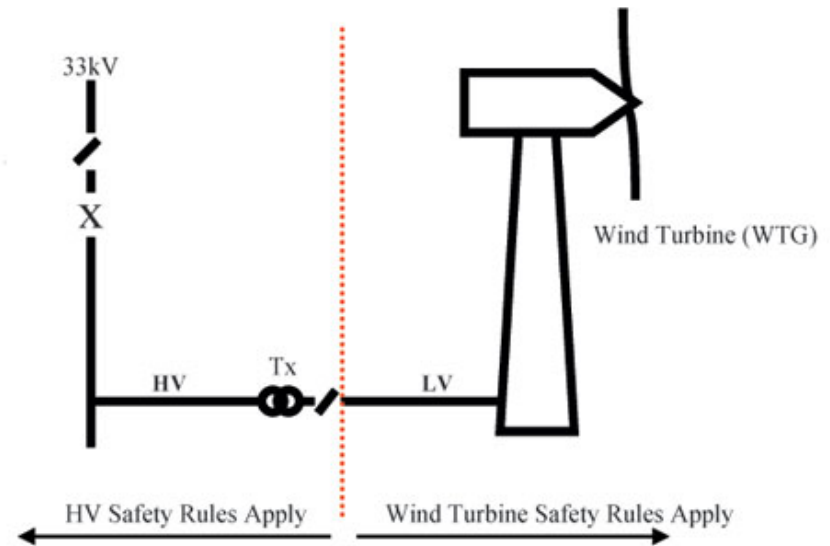
- Key BWEA priority
- Accredited courses
  - WAH/Rescue
  - Marine Survival
- Windskills Project
- Clarity in standards
- More providers needed
- New BWEA framework



embrace

# WTSR

- Wind Turbine Safety Rules
- Industry developed SSW
- >100 wind farms
- Worker involvement
- Safety benefits major
- Stop Press
  - Version 3 out now!
- WFSR
  - Watch this space.



# Switchgear

- HSE concern
- Safety critical
- Different standards
- Knowledge gaps
- Location risks
- BWEA working group
- New guidance/information?



embrace

# Incident Management

- BWEA Incident database
- Small systems/W&T
- Crisis management
- Recent experience
- Failure modes?
- RIDDOR/LTA data?
- Benchmarked data?



embrace

# Wind Week

- Celebrate – but stay safe!
  - Event safety policy statement
  - Event safety co-ordinator
  - PLI cover
  - Event risk assessment
  - Event safety plan covering
  - Emergencies arrangements
- Help via BWEA/SR

**renewables  
festival 09**  
13th-14th June



**BWEA**  
Delivering the UK's wind, wave and tidal energy



# Summary

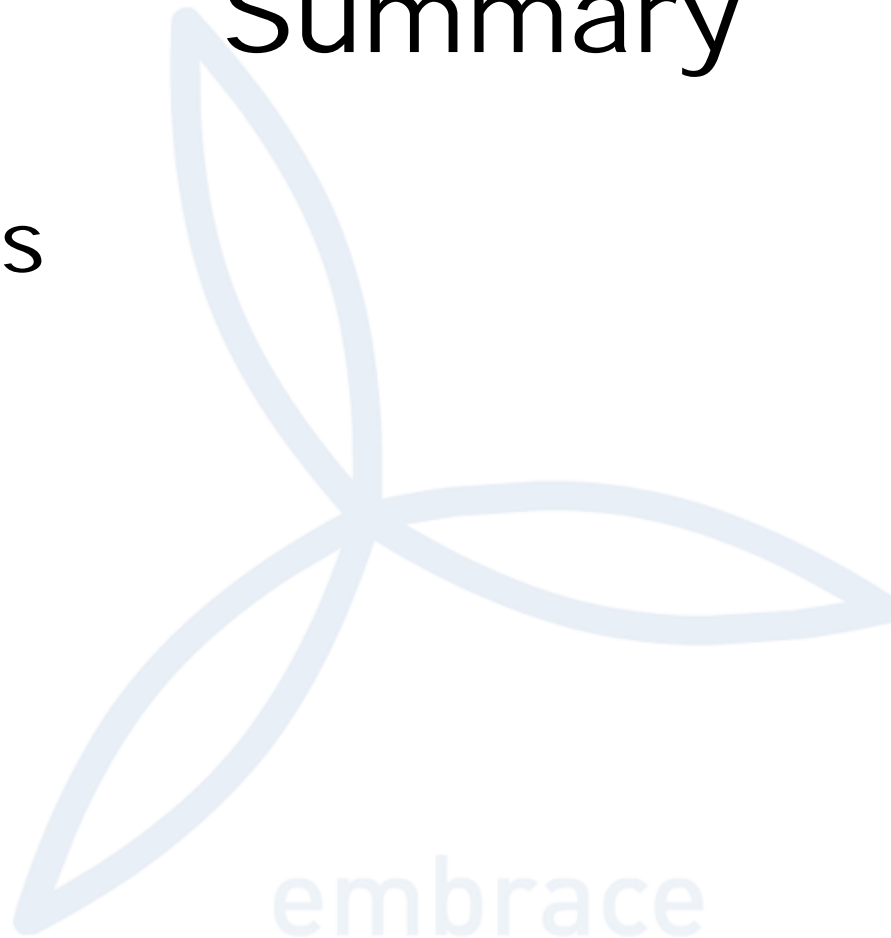
embrace

**BWEA**

Delivering the UK's wind, wave and tidal energy

# Summary

- Themes
- Future



embrace

# Themes

- Prioritise
  - Identify & address material risks
- Check
  - Recognising and applying relevant guidance
- Respond
  - Adopt a proportionate response to risks identified
- Lead
  - Role and involvement of senior management
- Involve
  - Competence and worker involvement
- Prepare
  - 1<sup>st</sup> and 2<sup>nd</sup> line of defence to manage emergencies.

# Future

**Design, Location & Certification**

**Construction & Commissioning**

**Operation & Maintenance**

**Incidents & Emergencies**

embrace

# Future

**Design, Location & Certification**

**Construction & Commissioning**

**Operation & Maintenance**

**Incidents & Emergencies**

- **Duty Holders**
  - Policies
  - Risk Assessment
  - Laws/Standards
  - Competence
  - Assurance

embrace

# Future

Design, Location & Certification

Construction & Commissioning

Operation & Maintenance

Incidents & Emergencies

- BWEA
  - Representation
  - Consultation
  - Information
  - Standards
  - Guidelines
  - Crisis management



# Safety in the Spotlight

Chris Streatfeild

Director of Health & Safety

embrace