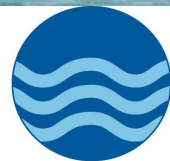




CETO™

Zero-Emission Power

Zero-Emission Freshwater



RENEWABLE ENERGY
HOLDINGS PLC



Wind Generation - Germany

Total planned installed capacity of 45.1 MW

German Wind farm	32.5MW
Expansion July 2007	8.0MW
Expansion April 2008	4.6MW





Biomass - Wales

- Bryn Posteg landfill gas - 1MW generation
- Gas curve matures to 2MW generation September 2008





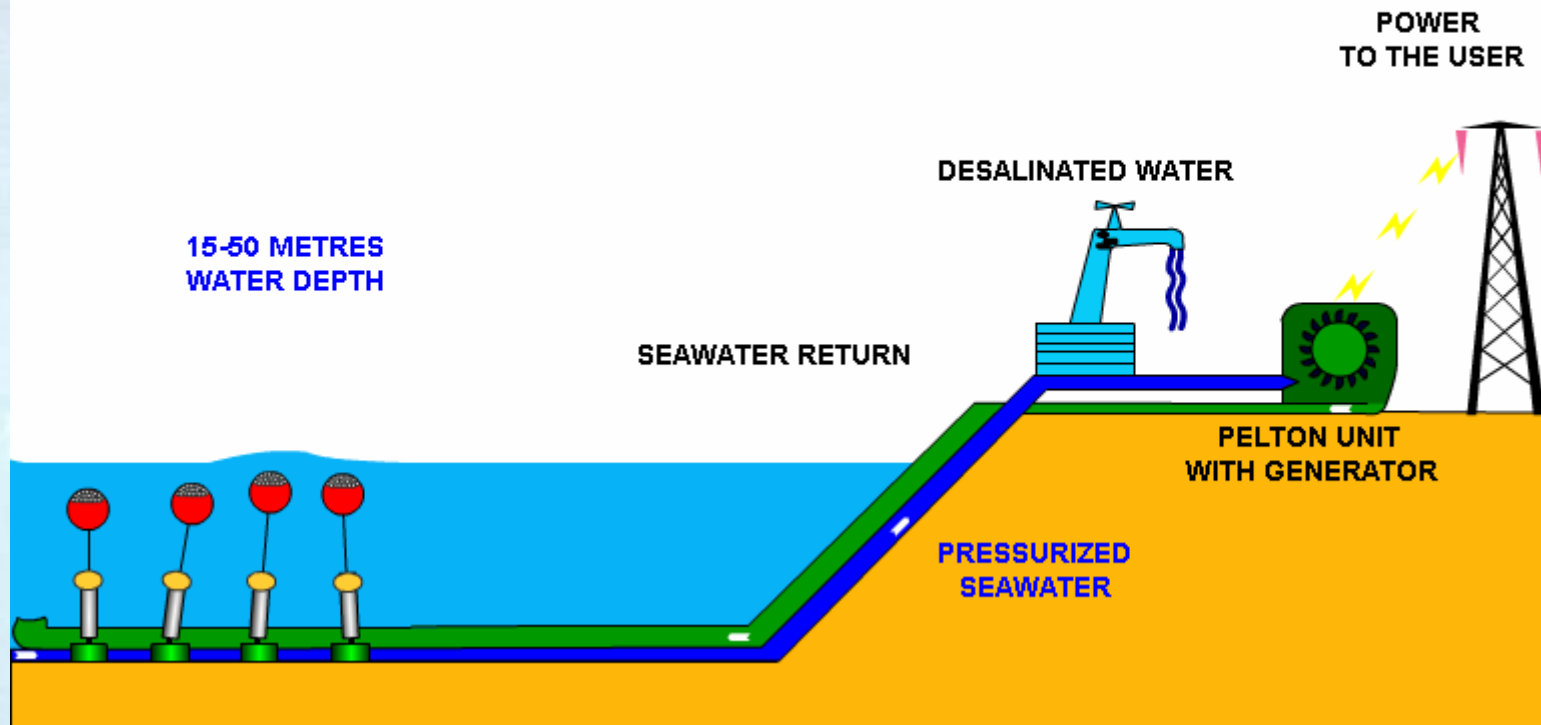
Wave Energy – a global resource



Wave Energy Resource – average annual kW/m of wave front from www.wavegen.co.uk



OVERALL POWER AND WATER SCHEMATIC



CETO produces electricity and fresh water by harnessing the power of ocean waves



CETO development timeline

CETO™

1999 - 2003

Pre-CETO

- Scale models
- Wave tank & flume testing

2003 - 2006

CETO I

- Technology demonstrator at Fremantle
- 12 months operation
- Pressurised seawater
- RO desalination and power production

2007 - 2008

CETO II

- Pre-commercial array at Fremantle

2009 – 2010

CETO III

- Commercial array producing kWh & kL





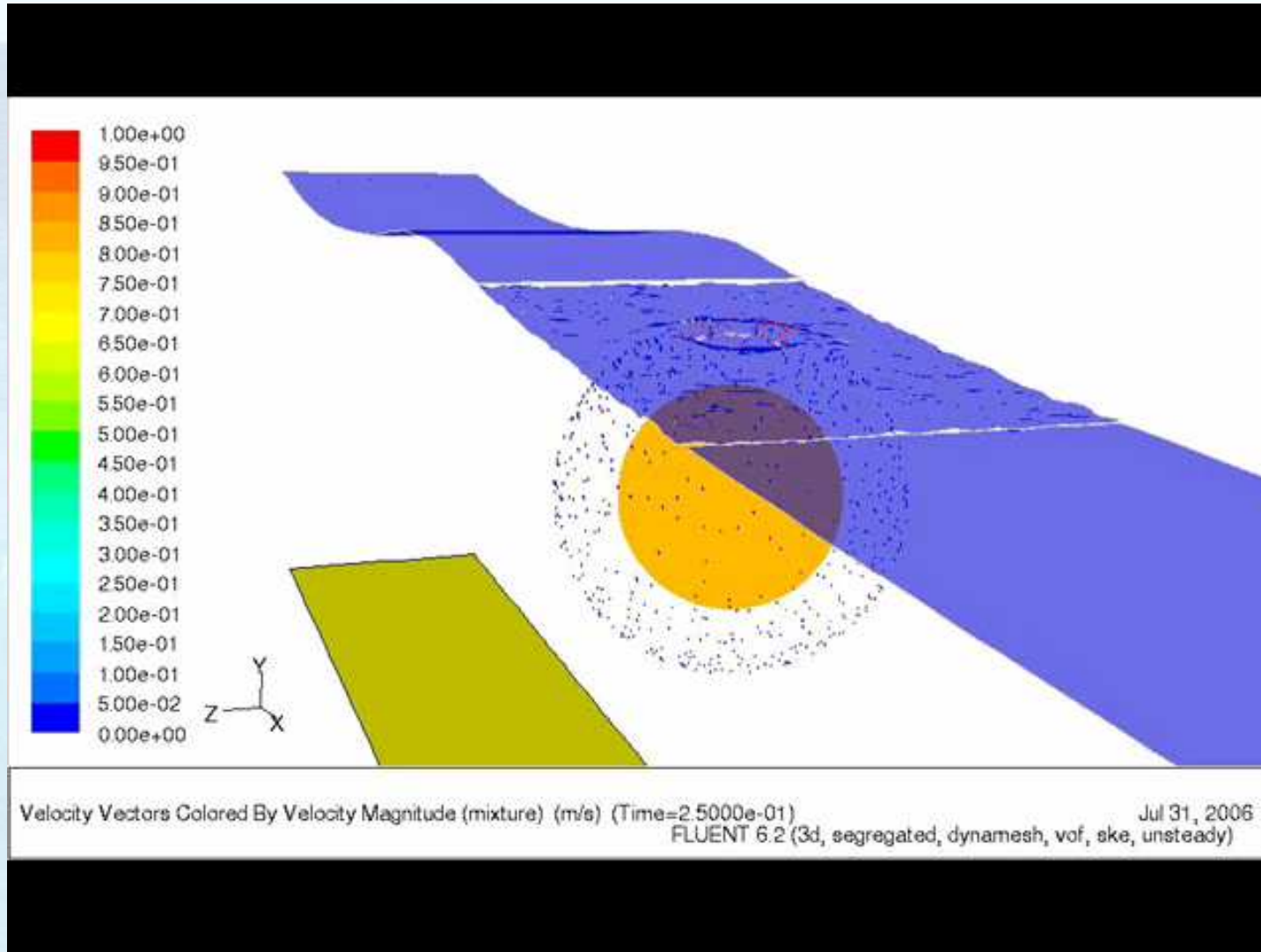
CETO II Technology

CETO™

A combination of novel & proven technologies

- Proprietary technology
 - Self-lubricated pump
 - Buoyant Actuator
 - Filter, Swivel, Pump Float, Dampener
- Established, proven technology
 - Pipeline
 - Mooring
 - Pelton turbine
 - Reverse osmosis desalination

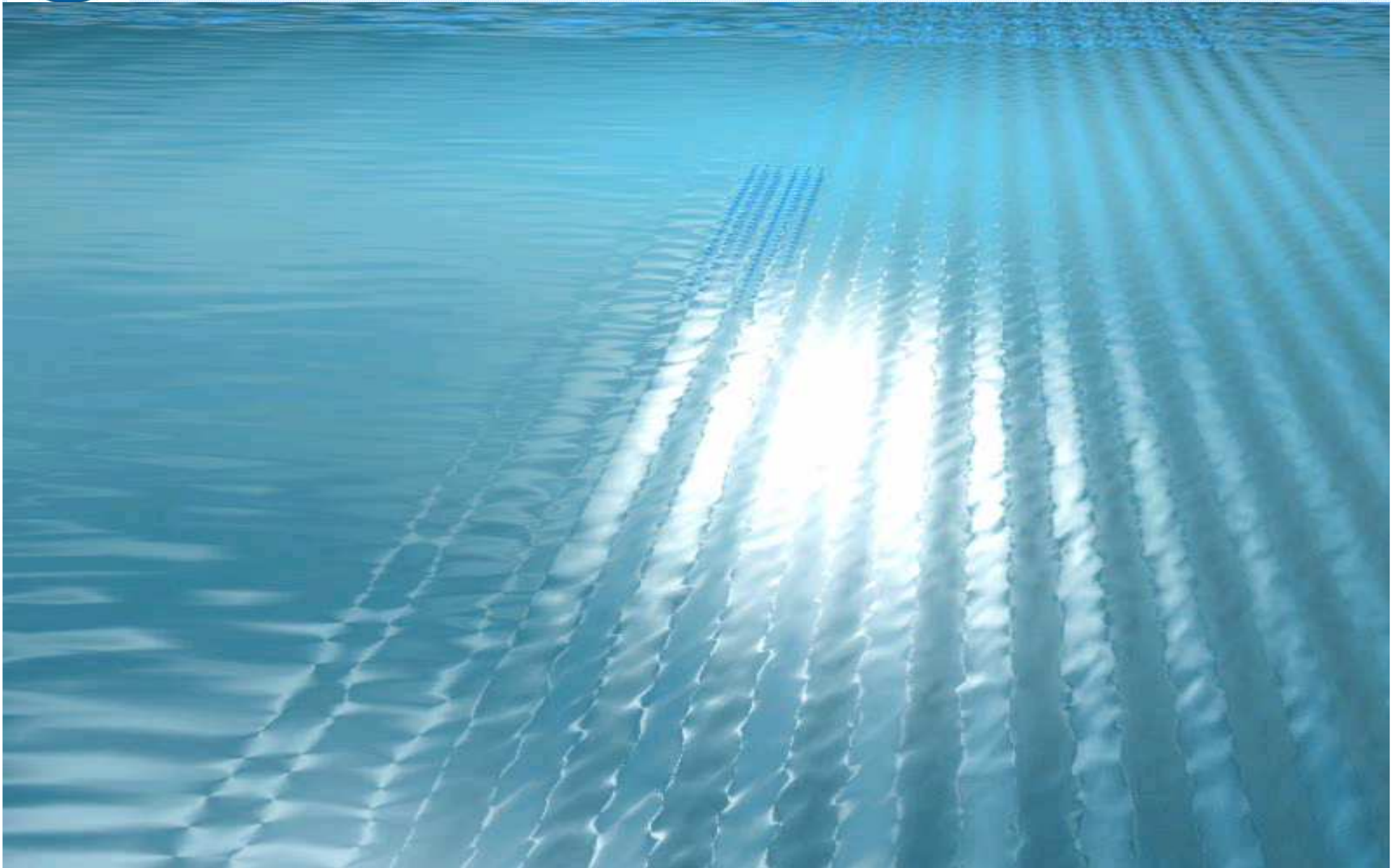






CETO III Wave Farm

CETO™





Independent Technical Report

“Whilst no guarantee can be provided at this stage in the technology’s development cycle, on the basis of the information made available to date, PB Power believes there to be a reasonable chance of commercial success”

“The development of the CETO devices is following a logical progression and a demonstration project is the next logical step”

- PB Power; January 2007 -



Financial Modelling

Range of likely electricity generation prices

Pre Tax	Base	O&M +30%	O&M -30%
Base	£53/MWh	£63/MWh	£44/MWh
Capital +30%	£57/MWh	£67/MWh	£48/MWh
Capital -30%	£50/MWh	£60/MWh	£41/MWh

- PB Power; January 2007 -



For more information

CETO™

www.reh-plc.com

www.ceto.com.au

j.retief@reh-plc.com

mottaviano@seapowerpacific.com

