

# **WOODFUEL USAGE IN BRITAIN**

**H. M. McKay**  
**Forestry Commission**

- Four Public Opinion surveys of **domestic** use (1997-2007)
  - 1997 GB 4000
  - 2004 Scotland 4000 + follow-on of 190 users
  - 2005 Wales 1000
  - 2007 GB 4000
- Three comprehensive surveys of **commercial and industrial** installations in Scotland (2005, 2006, 2007)



# major industries in Scotland

- Major ( $>1000$  odt  $y^{-1}$ )
  - 12 companies (up from 10 in 2005)
  - used mainly for power generation through co-firing and heat production in the wood processing industry
    - 281,000 odt annually
    - 412,000 t CO<sub>2</sub> savings annually

- Other commercial and industrial ( $<1000$  odt  $y^{-1}$  ), heat-only production
  - 79 (32<sub>05</sub>, 42<sub>06</sub>) small industrial, commercial or community developments,
  - installed capacity (13MW)
    - 8,000 (4,000<sub>06</sub>) odt annually
    - 10,000 t CO<sub>2</sub> savings annually

# wood heating projects in Britain

- Renewable Energy Association 2006
- Non-domestic
- In operation or under construction

Country	No projects	Installed cap (MW)
England	298	115
Scotland	45	10
Wales	<u>52</u>	<u>10</u>
	<u>395</u>	<u>135</u>

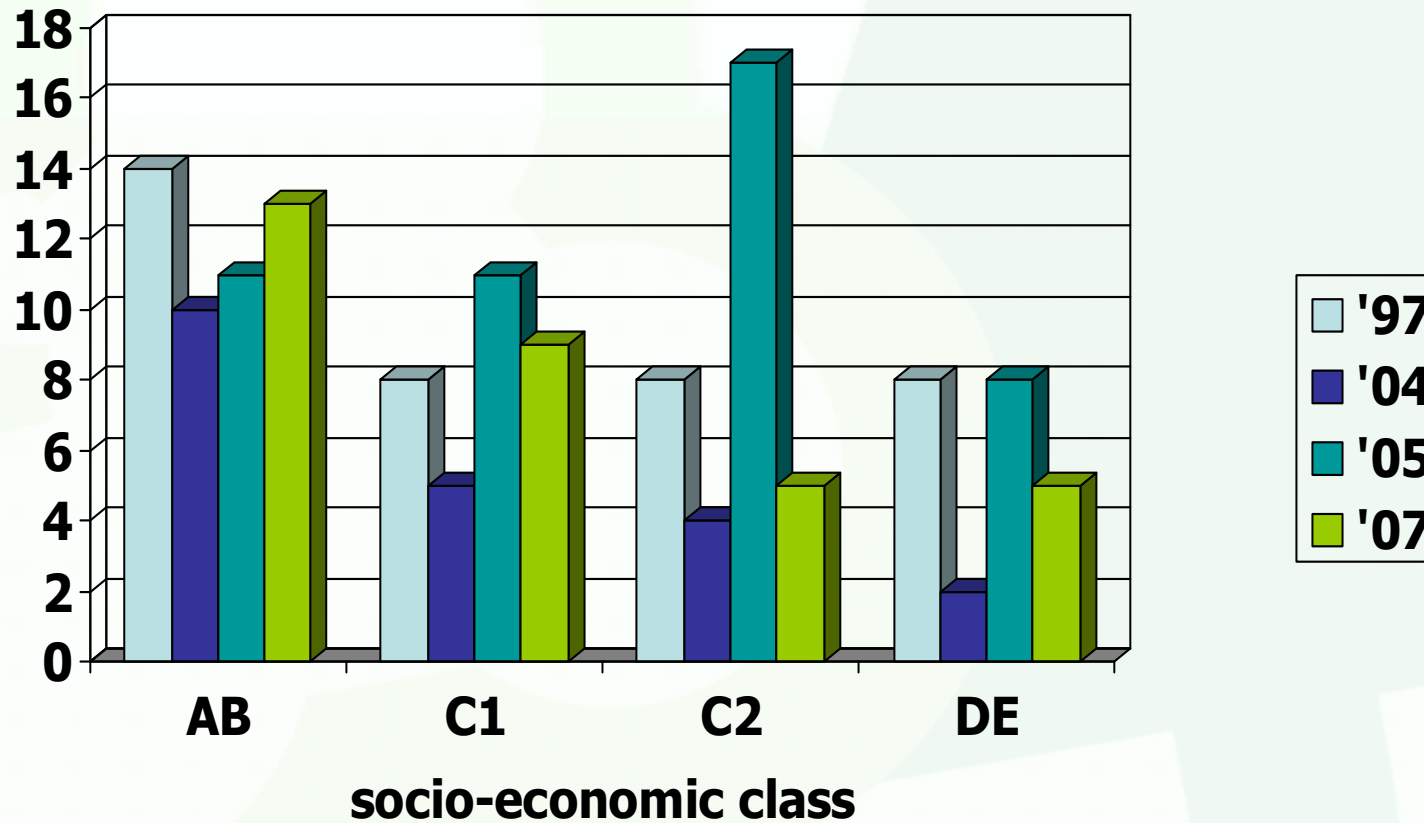


- Most people who didn't use woodfuel were happy with existing system (26%<sub>S</sub>; 40%<sub>W</sub>) or woodfuel system was not practical (67%<sub>S</sub>; 33%<sub>W</sub>)
- Proportion of households using woodfuel has stayed relatively constant
  - 1997 GB 9%
  - [2004 Scotland 5%]
  - [2005 Wales 11%]
  - 2007 GB 8%

- Substantial differences between English regions
- Woodfuel users mostly in rural areas especially in Scotland and Wales
- About a third of woodfuel users use it regularly but decreasing gradually (38%<sub>97</sub>, 35%<sub>04</sub>, 31%<sub>07</sub>)
- Regular use in urban areas has decreased by a third (38%<sub>97</sub>, 26%<sub>04</sub>, 27%<sub>07</sub>)

- proportion of self-collectors negatively related to socio-economic group
- number of households using woodfuel positively related to socio-economic group

# % households using woodfuel



## domestic usage in GB

- data from detailed questionnaire + Omnibus Surveys gives an estimate of the domestic use of woodfuel in GB
  - 2.65 million odt's annually in 1997
  - 2.98 million odt's annually in 2007
- warning: quantity and frequency of deliveries based on only a few self-selected respondents and likely to be enthusiasts

- Woodfuel is already making a substantial contribution to renewable energy generation and GHG savings
- Co-firing, using imported biomass, contributes a major part of electricity generation and CO<sub>2</sub> savings

- **but home-grown wood used by other market sectors**
- usage by other (i.e. non co-firing) major industries increasing at 5% in last two years
- usage by smaller commercial and industrial sector has increased by 150% in last two years
- domestic usage is reasonably stable at 8% of all households but estimate of usage has been increased to just under 3 million odts